



BASED ON LOVEISRESPECT CONTACTS DOCUMENTED JANUARY–JUNE 2017

In 2017, loveisrespect documented **253 contacts** from Arizona. The state ranks 17th in terms of contact volume. Loveisrespect provides crisis intervention, safety-planning, referrals and DV education for these documented contacts*.



129
CALLS



104
CHATS

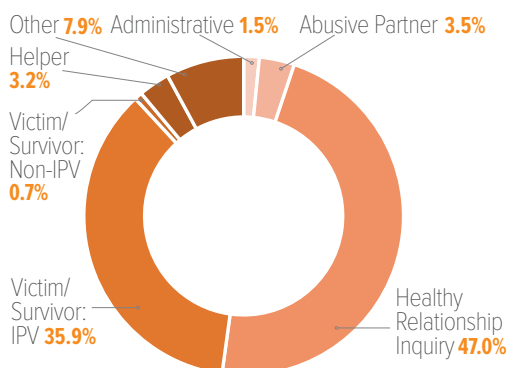


20
TEXTS

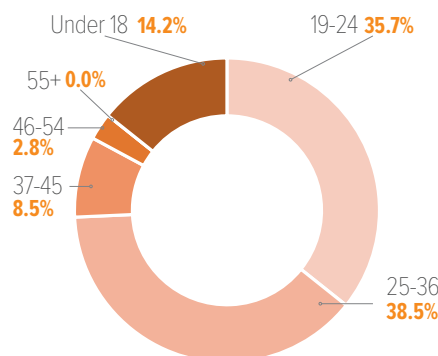


253
TOTAL

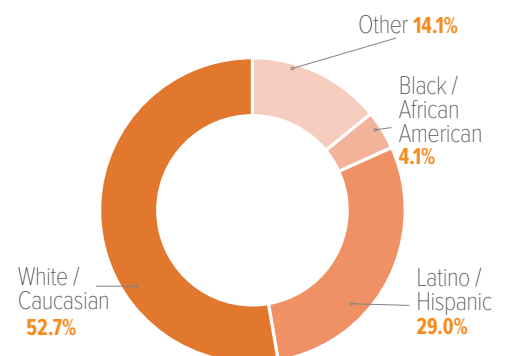
WHO IS CONTACTING LOVEISRESPECT FROM ARIZONA



CONTACT TYPE



VICTIM AGE



CONTACT ETHNICITY

CALLER TYPE DEFINITIONS

VICTIM/SURVIVOR: IPV (INTIMATE PARTNER VIOLENCE) – A victim or survivor of abuse from his/her partner or spouse.

VICTIM/SURVIVOR: NON-IPV – A victim or survivor of abuse by anyone else: parent, sibling, caregiver, etc.

HELPER – A caller reaching out to help another including: family/friend, service provider, law enforcement, medical/health, religious leader/program or teacher.

HEALTHY RELATIONSHIP INQUIRY – Anyone with questions about healthy relationships, where no abuse is present.

ADMINISTRATIVE – Someone seeking basic information, rather than advocacy.

ABUSIVE PARTNER – A caller who identifies as abusive or who an Advocate believes to be an abusive partner.

OTHER – Any caller about whom an Advocate is able to gather info, but who does not fit into an above category; this includes off target callers, non-DV calls, hang-ups, prank calls and feedback.

TOP 10 CITIES IN CONTACT VOLUME

1. PHOENIX	47.9%	7. QUEEN CREEK	2.1%
2. TUCSON	13.4%	8. CHANDLER	2.1%
3. MESA	4.6%	9. AVONDALE	1.7%
4. EL MIRAGE	4.2%	10. GLENDALE	1.7%
5. SCOTTSDALE	3.8%		
6. TEMPE	2.9%		

TOTAL 84.5%

CHAT: 24/7/365 · CALL: 1.866.331.9474 · TEXT: LOVEIS TO 22522

FOR MORE INFORMATION, VISIT WWW.LOVEISRESPECT.ORG



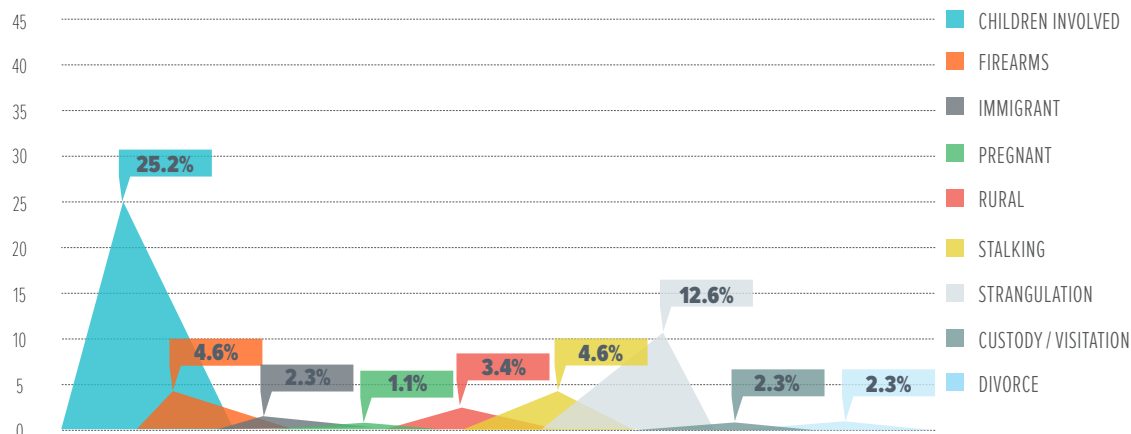
*Documented contacts refers to the calls, online chats or TTY calls, and Texts where a location was self-disclosed by the contact.



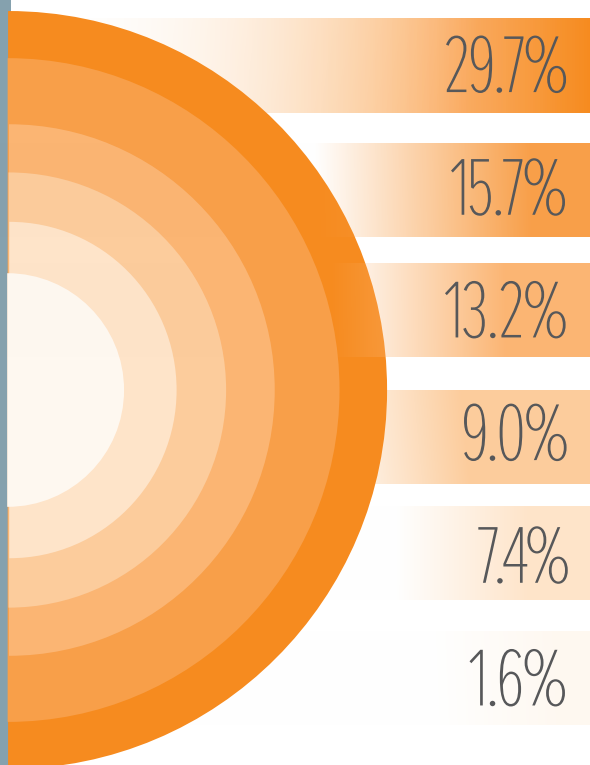
This project described was supported by Grant Number 90EV0426 from the Administration on Children, Youth and Families, Family and Youth Services Bureau, U.S. Department of Health and Human Services. The opinions, findings, conclusions and recommendations expressed in this publication are those of the author(s) and do not necessarily reflect the views of the Administration on Children, Youth and Families, Family and Youth Services Bureau, U.S. Department of Health and Human Services.



MOST COMMON DISCLOSED SPECIAL FACTORS

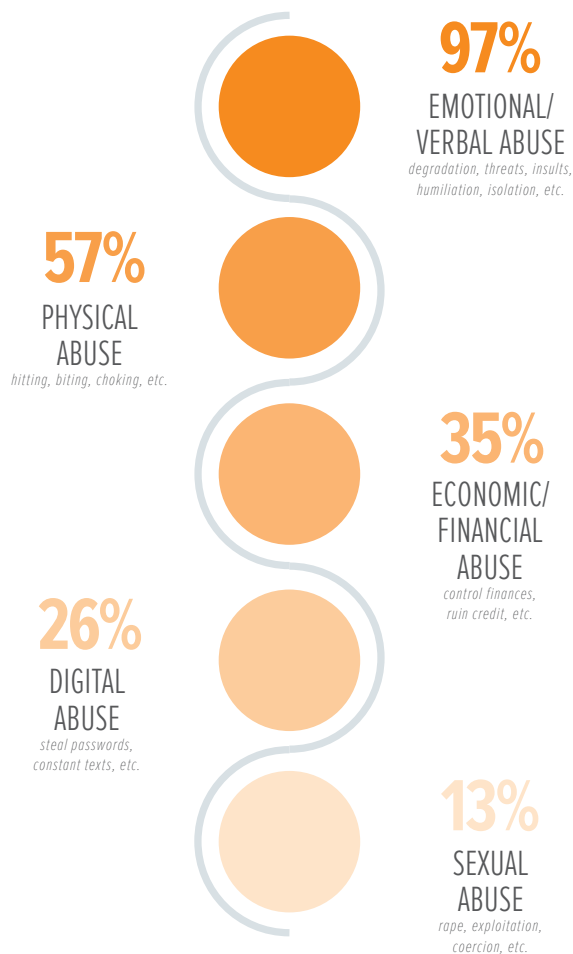


WHAT DO VICTIMS NEED



- 36 Individual Professional Counseling
- 19 Domestic Violence Support Groups
- 16 Legal Advocacy
- 11 Protective/Restraining Order Assistance
- 9 Domestic Violence Shelter
- 2 Legal Representation

WHAT ARE VICTIMS EXPERIENCING



TOP RESOURCE REFERRALS

Scarleteen
RAINN
GoodTherapy.org
211 - United Way
Reach Out

340

REFERRALS TO SERVICE PROVIDERS

47

OFFERS TO DIRECT CONNECT

329

REFERRALS TO OTHER RESOURCES

LOVEISRESPECT.ORG

loveisrespect.org is a comprehensive online resource for teens and young adults affected by dating abuse.

New Visitors Jan. – June 2017:

1,741,801

Visits Jan. – June 2017:

2,105,539

MOST VIEWED PAGES ON LOVEISRESPECT.ORG IN 2017

Is My Relationship Healthy? Quiz
Types of Abuse
Healthy Relationships
Am I A Good Partner? Quiz
How Can We Communicate Better?
Building Trust After Cheating